

Appendix B

DRAFT 14 FINAL – December 10, 2007

Area Demographics

The following demographic information provides an overview of the Longs Peak Council area. Useful information is provided in the following figures:

Figure B-1. Longs Peak Council Area Overview

Figure B-2. Population Distribution

Figure B-3. Current Scout Districts

Figure B-4. Population Distribution of Current Scouts

Figure B-5. Population Distribution of Current Scouts with Rural Addresses

Figure B-6. Population Distribution of Current Scout Unit Commissioners

Figure B-7. Population Growth by Household 2005-2010

Figure B-8. Population Growth by TAY 2005-2010

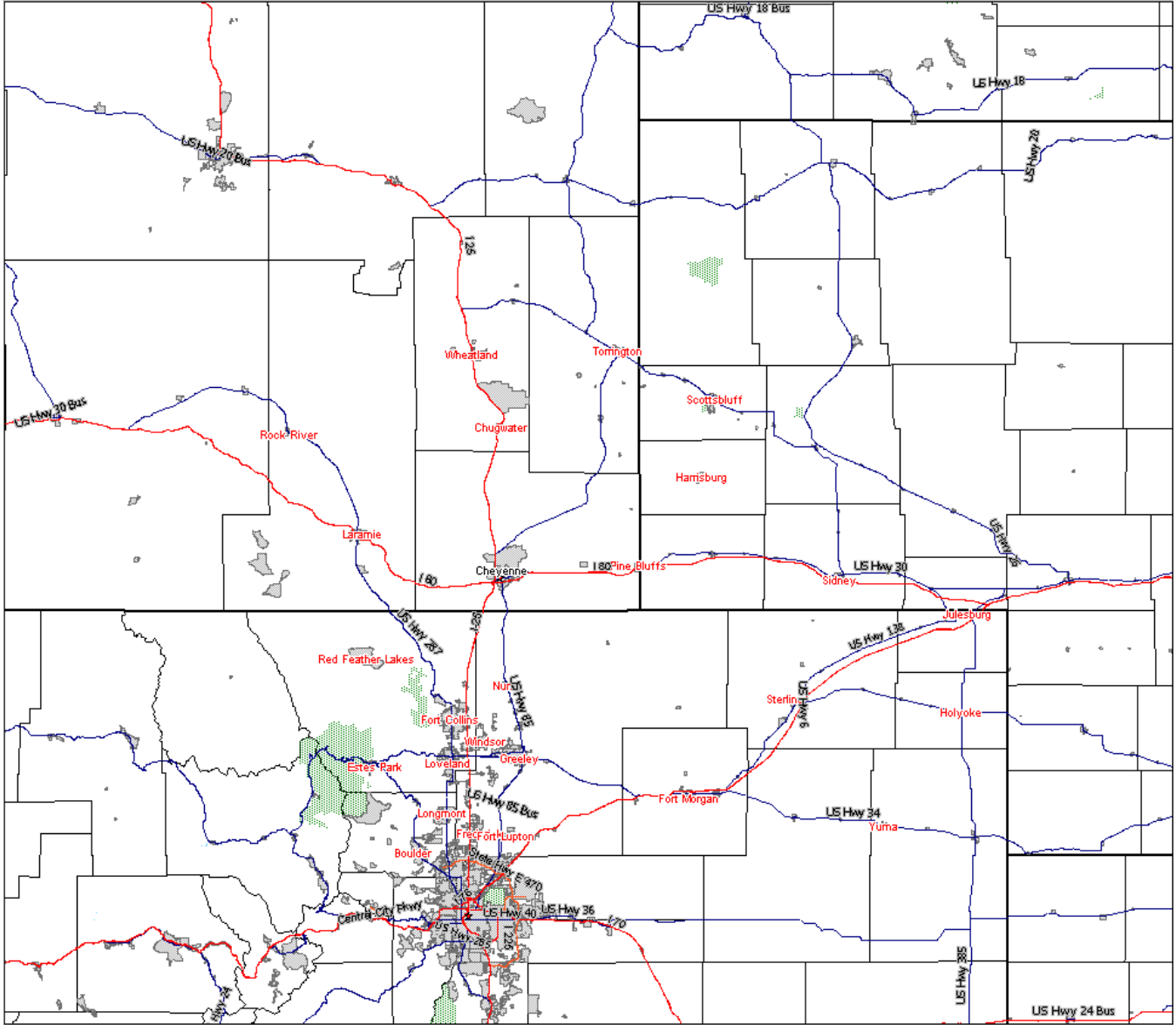
Figure B-9. Percent Growth in TAY 2005-2010

Figure B-10. Current White to Hispanic Ratio

Figure B-11. School District TAY Summary

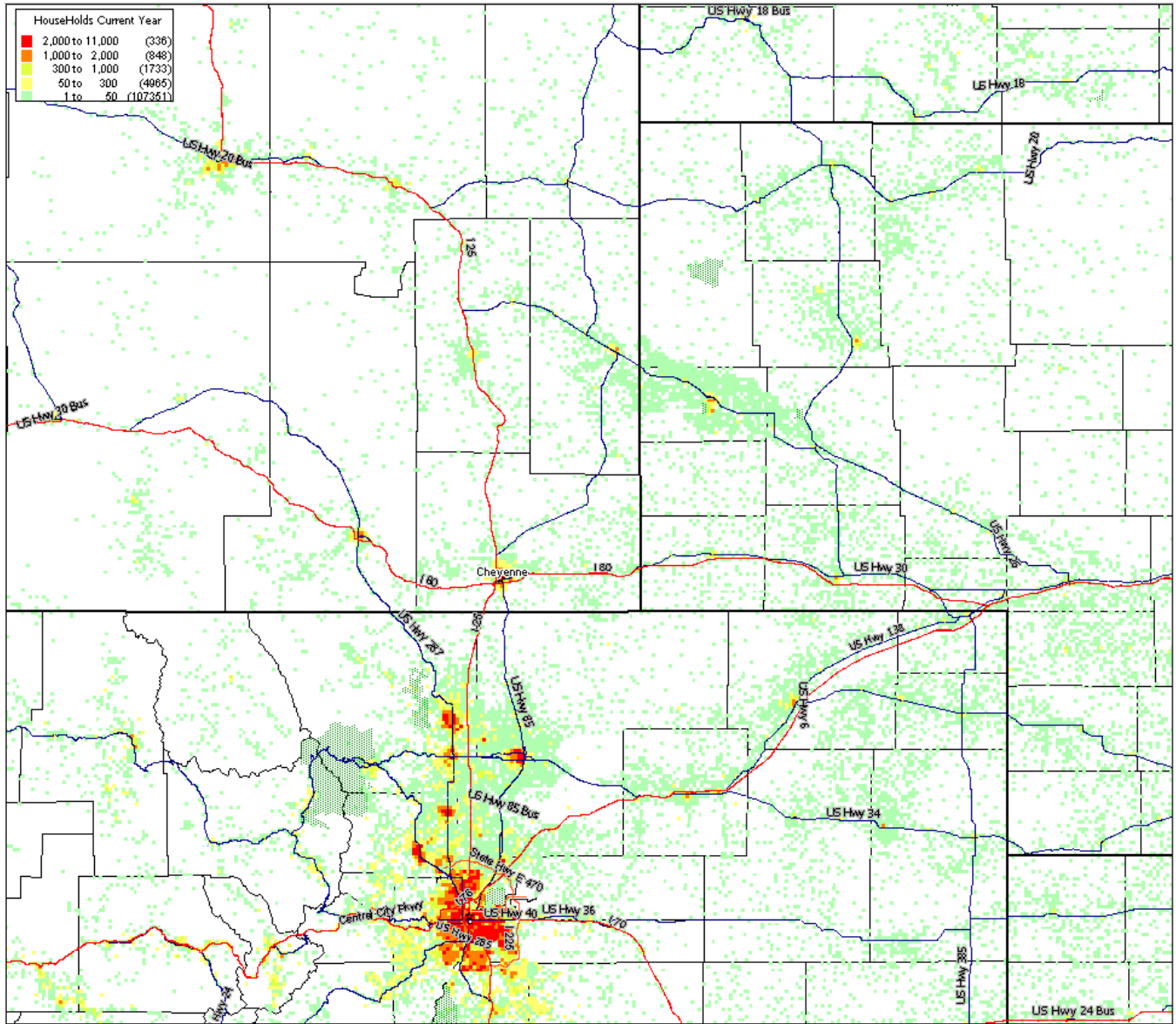
Figure B-12. Scout, Scout Leader, TAY and Student Populations

Figure B-1. Longs Peak Council Area Overview



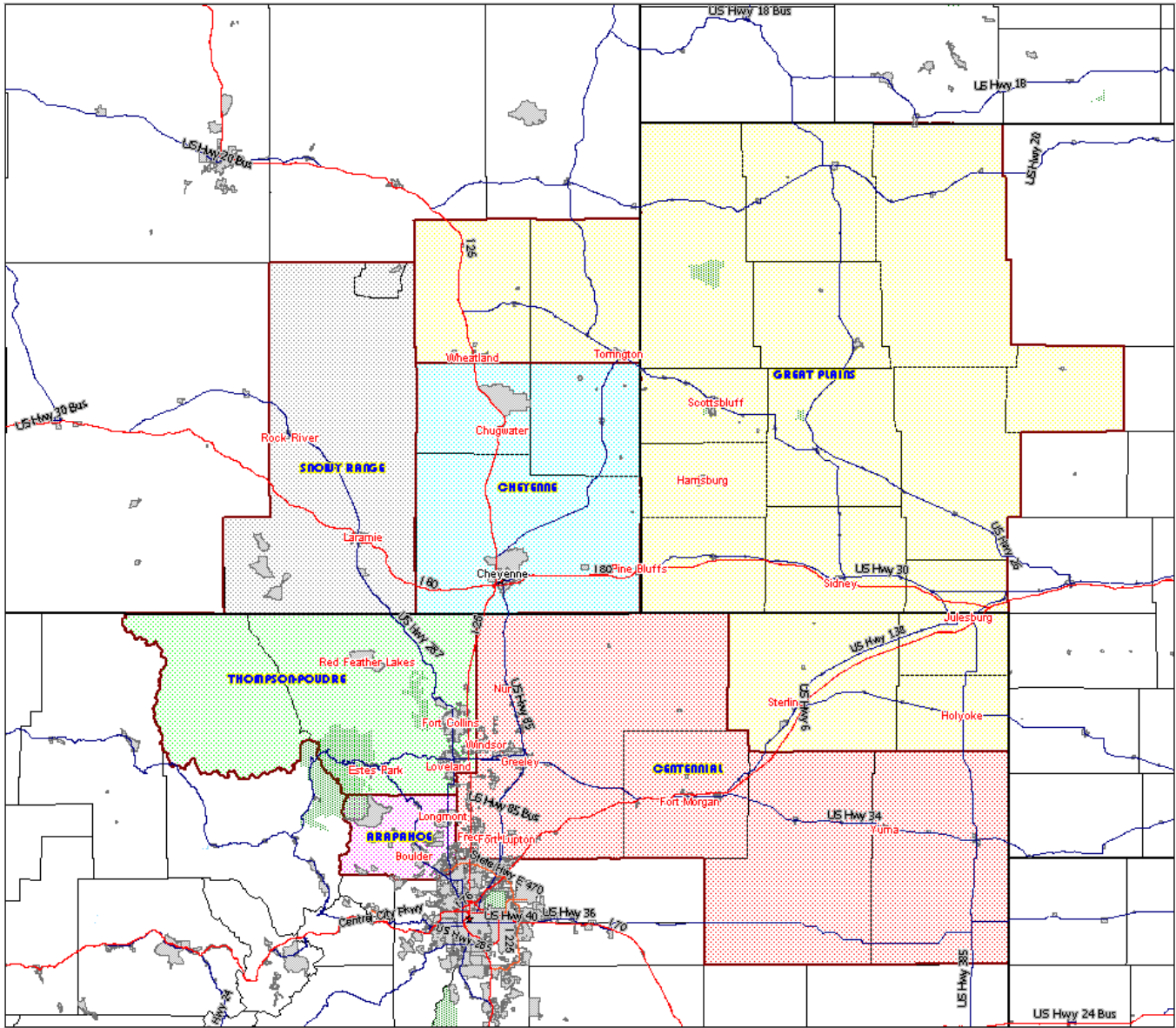
This figure provides an overview of the Longs Peak Council area. The area includes Northern Colorado, Western Nebraska and Southeast Wyoming.

Figure B-2. Population Distribution



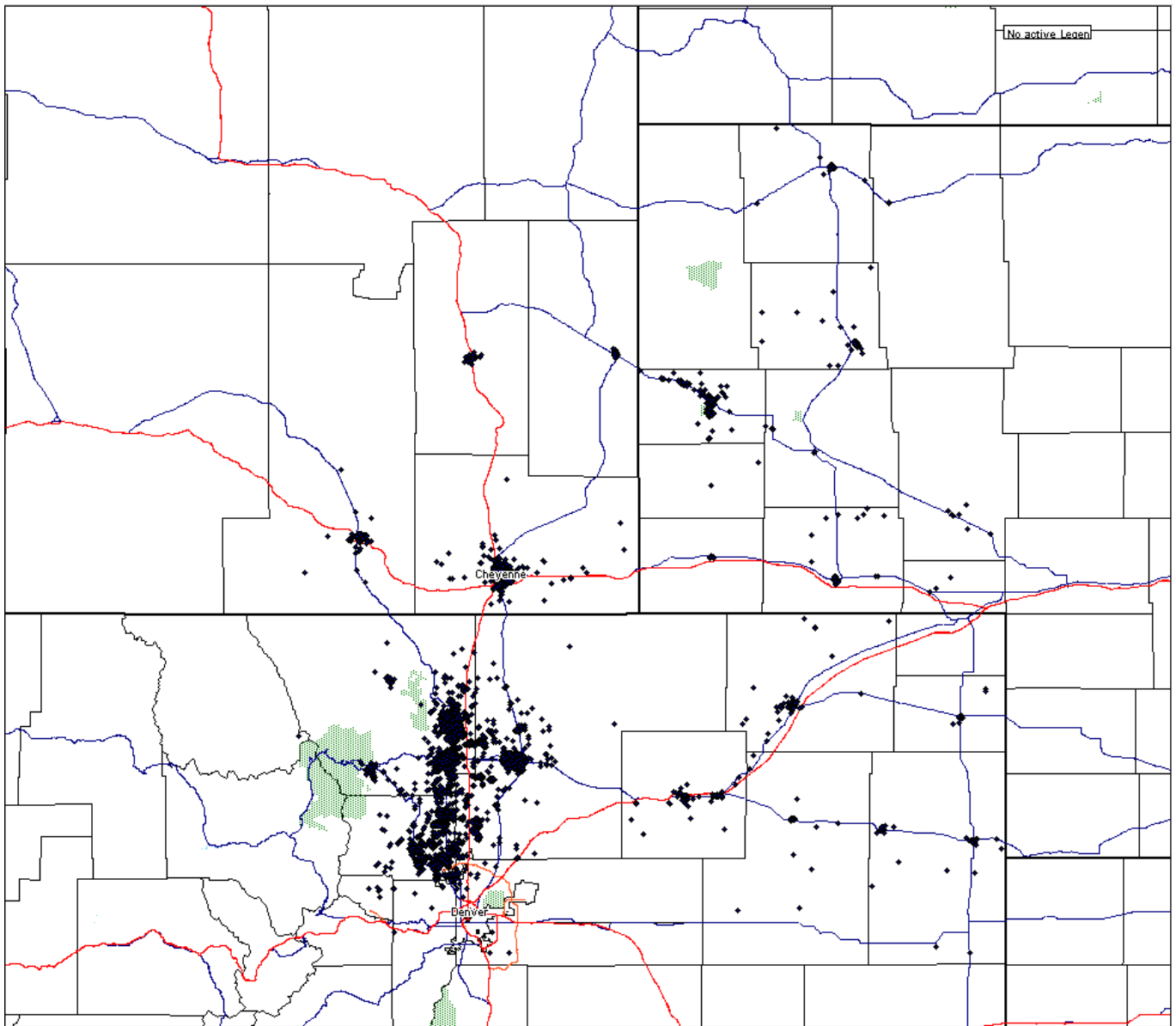
The green dots represent a density of one to 50 households. The red areas represent a density of 2,000 to 11,000 households. The prevalence of green dots points to the relatively rural nature of the Longs Peak Council.

Figure B-3. Current Scout Districts



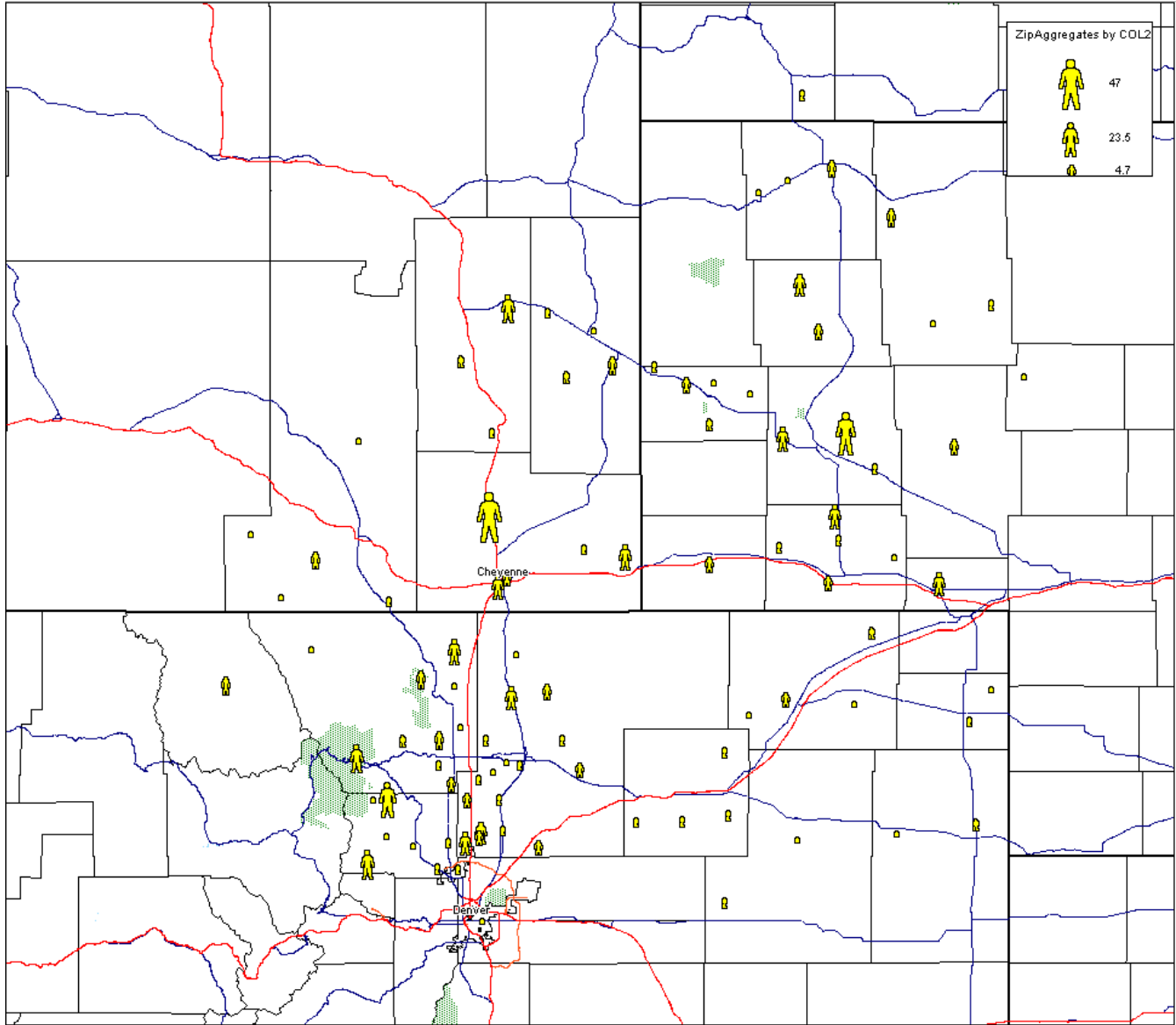
Each of the current six Districts within the Longs Peak Council is identified in Figure B-3. The Great Plains District is the largest, followed by the Centennial District. These large districts have challenges with regard to distances that district personnel must drive to district events.

Figure B-4. Population Distribution of Current Scouts



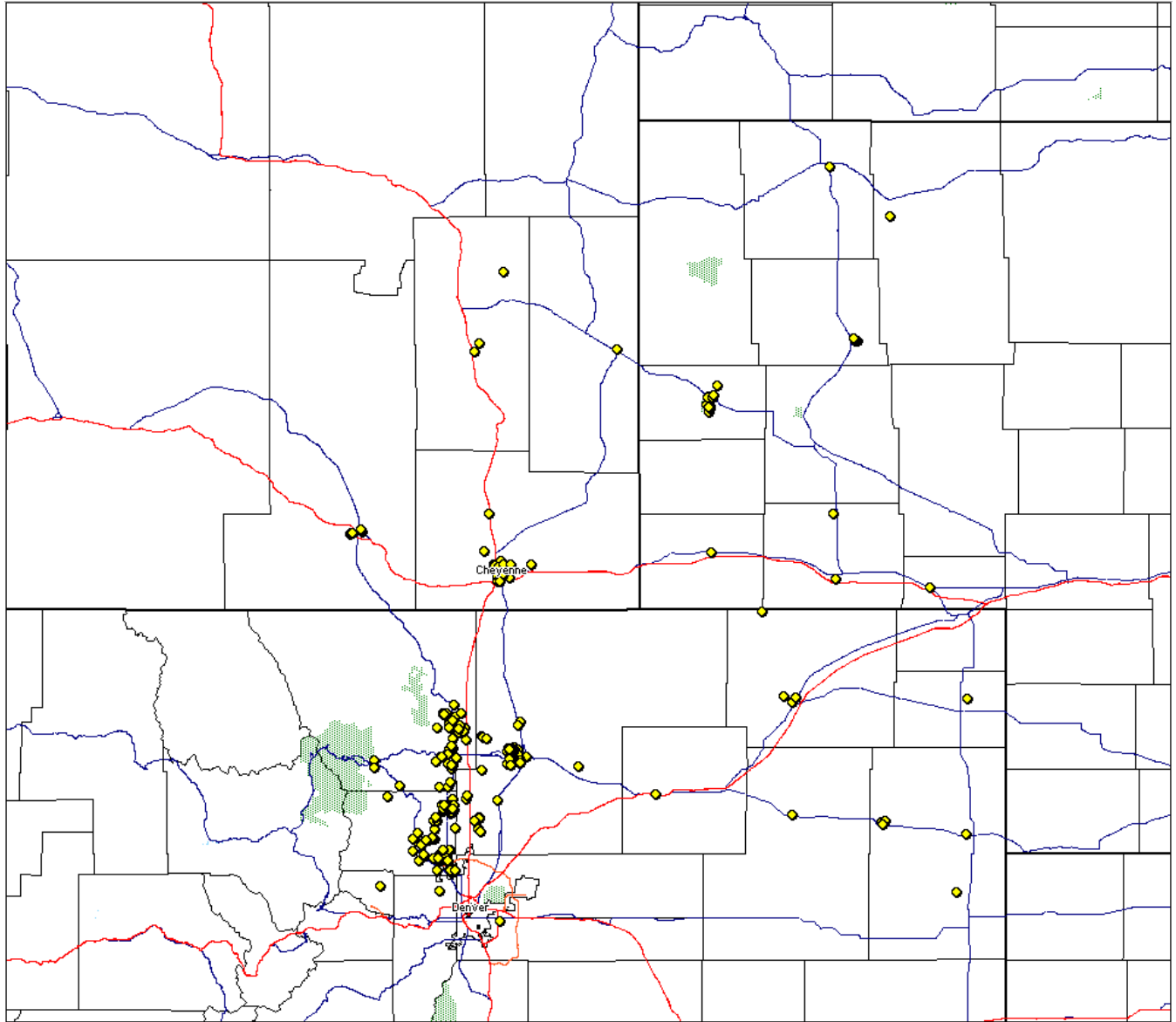
Each black dot represents one scout within the Longs Peak Council. The greatest density of scouts is along the front range of Colorado.

Figure B-5. Population Distribution of Current Scouts with Rural Addresses



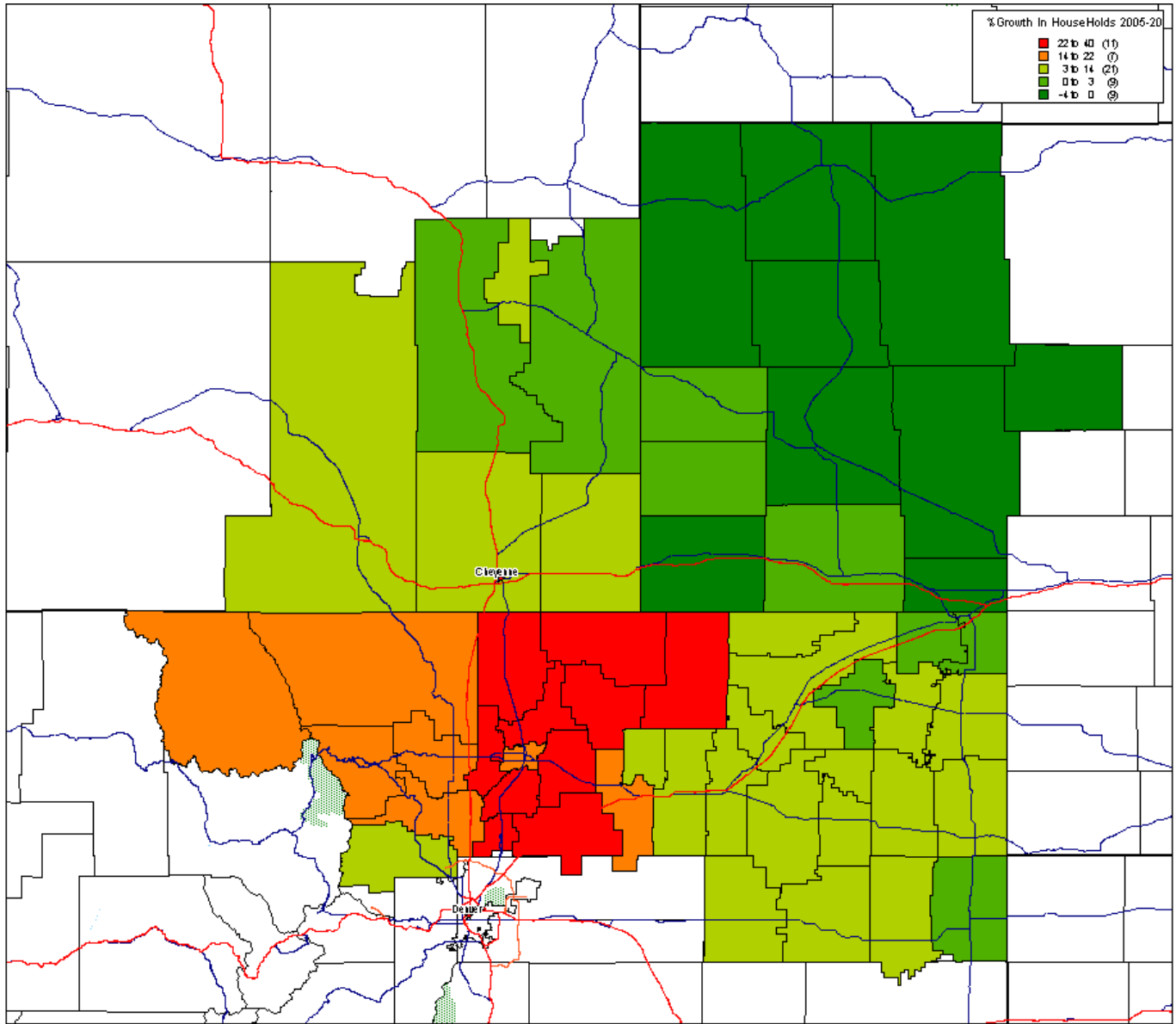
The yellow figures represent numbers of scouts with rural addresses as a rural route or Post Office. The small figure is a density of 4.7 scouts, the medium figure 23.5 scouts and the large figure represents 47 scouts.

Figure B-6. Population Distribution of Current Scout Unit Commissioners



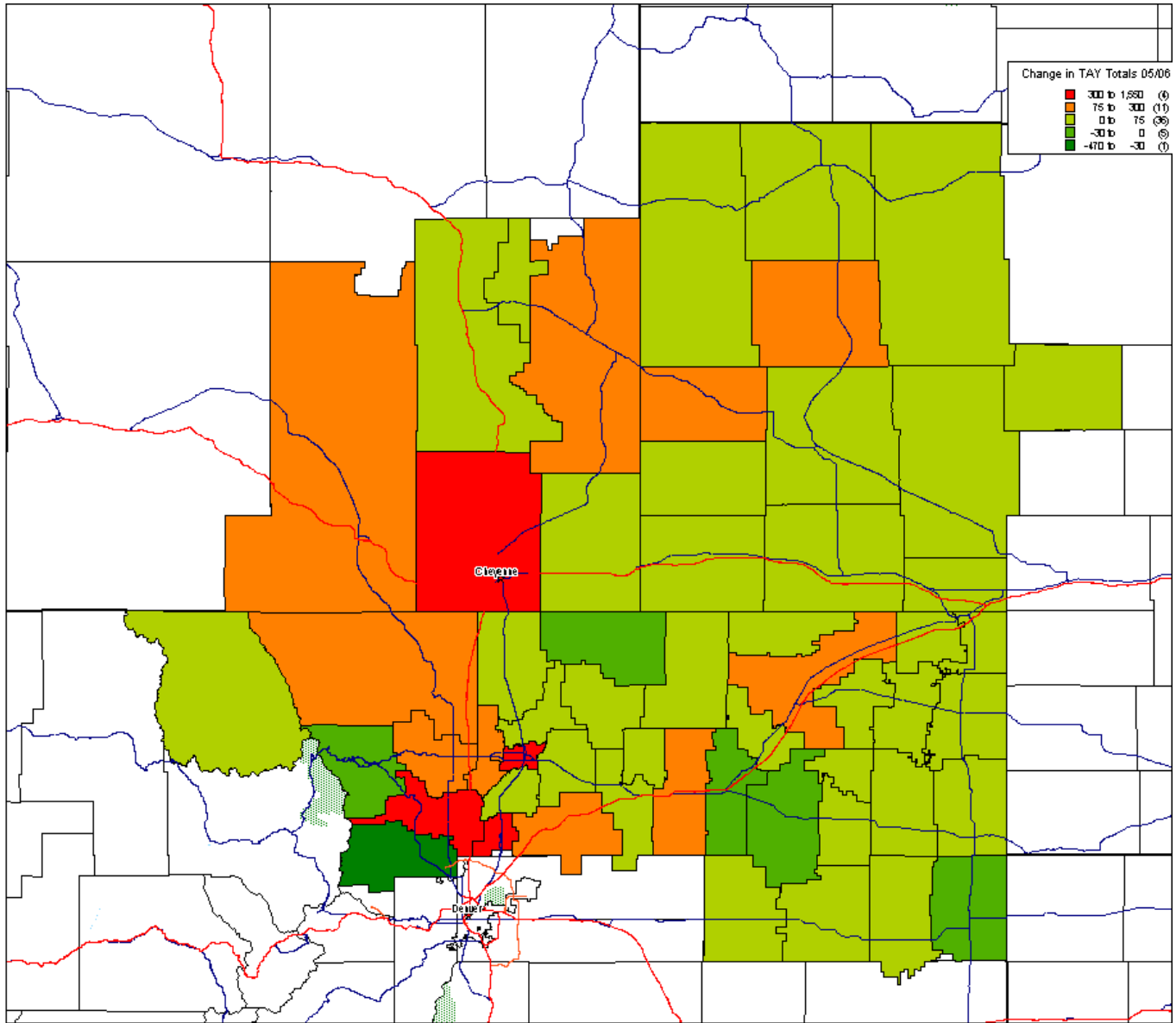
Each yellow dot represents one unit commissioner. It is helpful to know how the commissioners will be distributed within the newly proposed scout districts.

Figure B-7. Population Growth by Household 2005-2010



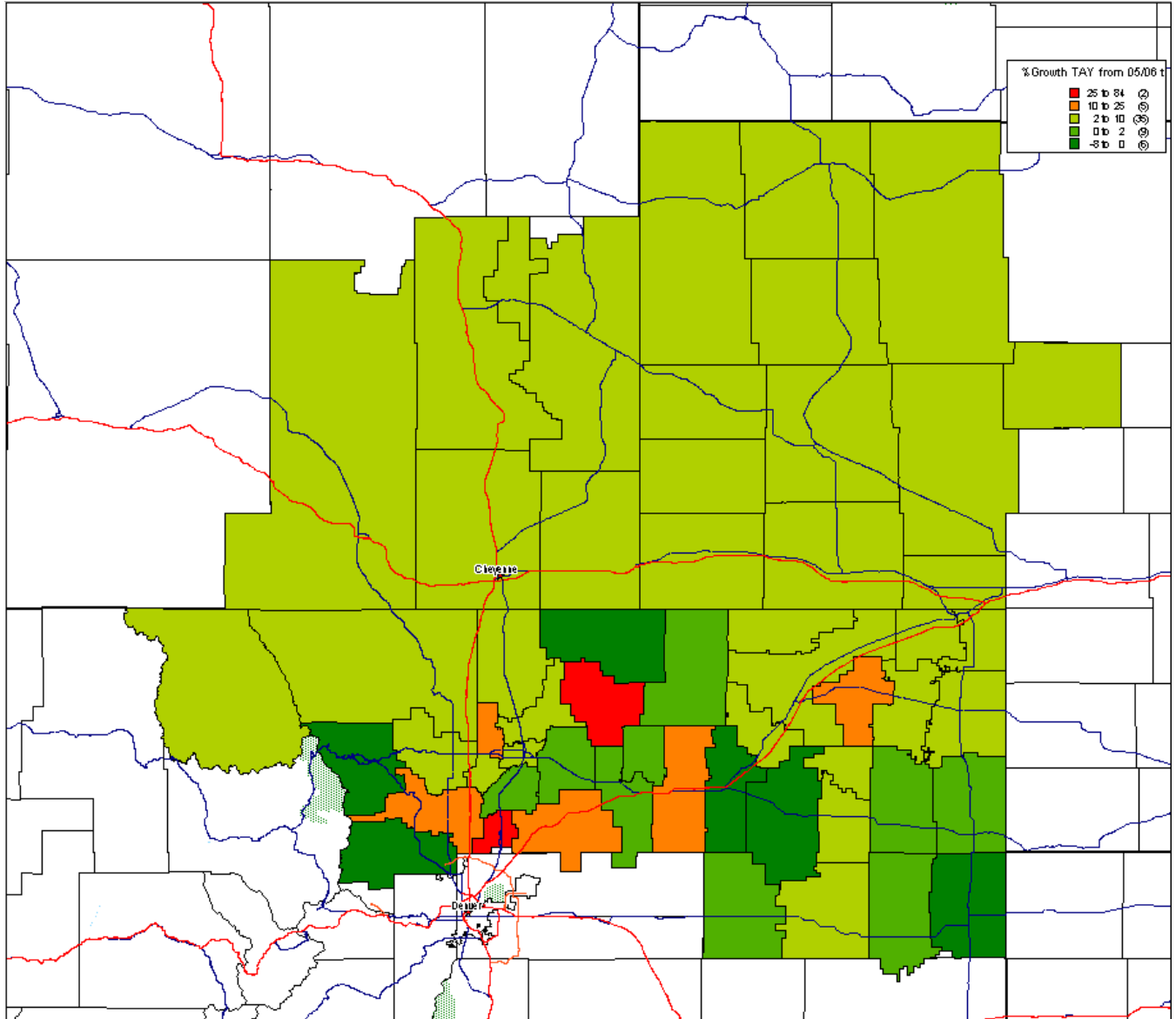
The highest growth areas are the Thompson Poudre District, The Arapahoe District and the Centennial District where households, indicated by the red areas, are projected to grow 22 to 40 percent between 2005 and 2010.

Figure B-8. Population Growth by TAY 2005-2010



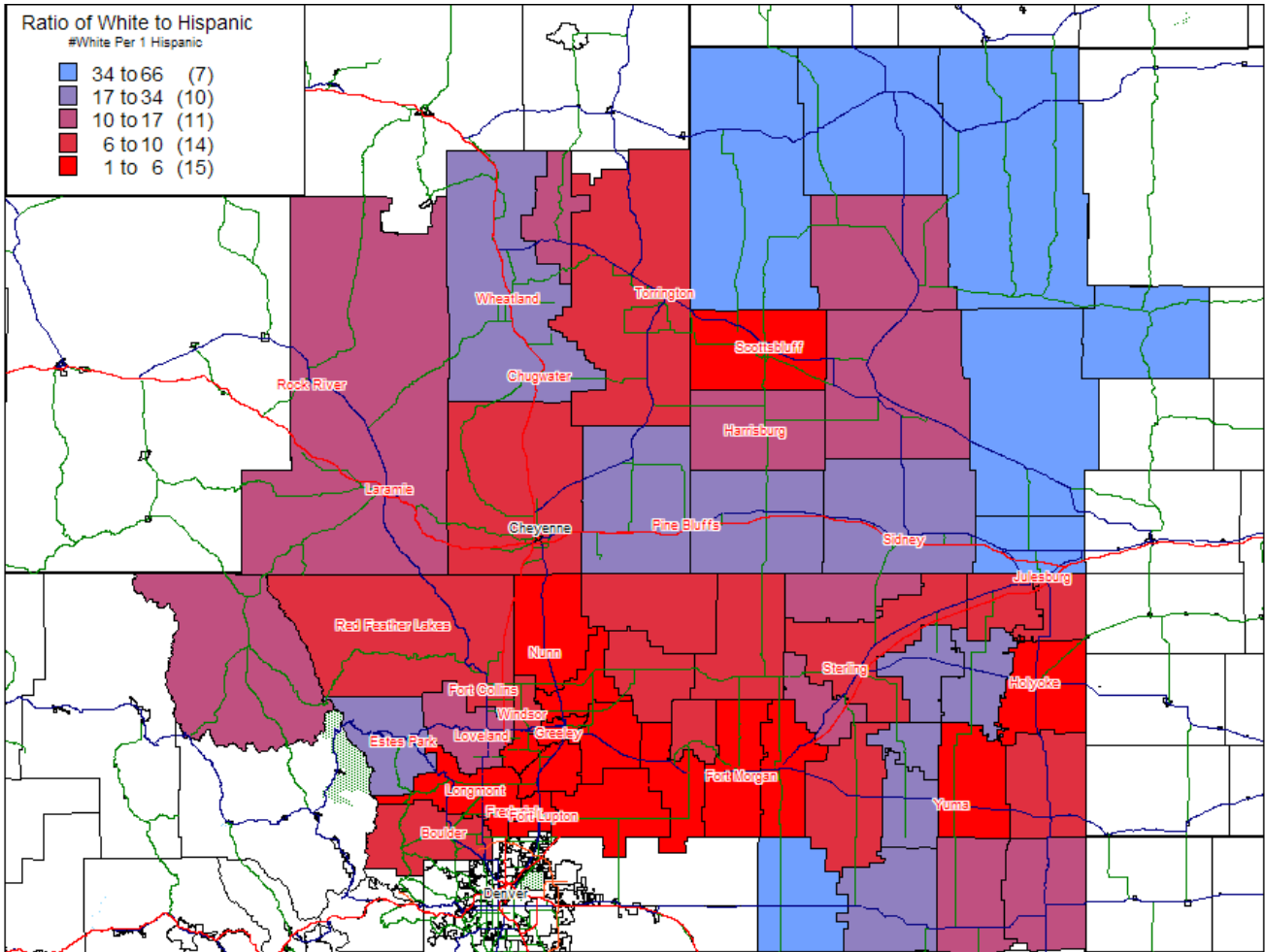
The school provided TAY growth data shows the greatest growth in red at 300 to 1,550 TAY over the five year period from 2005 - 2010. Note the dark green areas show a negative growth of -47- to -30 TAY over the five year period.

Figure B-9. Percent Growth in TAY 2005-1010



Percent growth of TAY over the five year period is similar to absolute growth with the greatest growth in red and negative growth in dark green.

Figure B-10. Current White to Hispanic Ratio



White to Hispanic population ratios are between 34:1 and 66:1 in the blue areas. This ranges to a more dense Hispanic population ratio which varies from 1:1 to 6:1 in the red areas. Note also from the data in Figure B-12 that the Ratio of TAY to Registered Scouts is highest in areas of low white to Hispanic ratio. This provides an opportunity for increased scout membership in these areas.

Figure B-11. School District TAY Summary

Line	School Districts (County or State)	Number of School Districts	TAY 2005	TAY 2010
1	Boulder Valley Re-2 (Boulder)	1	14,694	14,283
2	St. Vrain Valley Re-1j (Boulder)	1	11,959	13,926
3	Erie Schools in St. Vrain Valley Re-1	1	712	829
4	All Weld County (Weld)	12	16,790	18,855
5	Ault Highland Re-9 (Weld)	1	422	448
6	Windsor Re-4 (Weld)	1	1,715	1,930
7	Prairie Re-11 (Weld)	1	61	61
8	Johnstown-Milliken Re-5	1	1,201	1,302
9	Fort Lupton – Weld County Re-8	1	1,293	2,373
10	4 (Morgan) 3 (Washington) 4 (Yuma) 4 (Logan) 2 (Sedgwick) 2 (Phillips) (Colo.)	19	6,377	6,728
11	4 (Morgan) 3 (Washington) 4 (Yuma)	11	3,726	3,823
12	4 (Logan) 2 (Sedgwick) 2 (Phillips) (Colo.)	8	2,651	2,905
1	2 (Platte) 2 (Goshen) 3 (Laramie) (Wyo.)	7	10,163	11,136
13	2 (Platte) 2 (Goshen)	4	1,983	2,173
14	3 (Laramie) (Wyo.)		8,180	8,963
15	22 (Nebr.)	22	8,667	9,496
16	Albany #1 (Albany/Wyo.);	1	2,050	2,246
17	North Park R1 (Jackson/Colo.)	1	131	149
18	Poudre (Larimer)	1	13,315	13,585
19	Thompson RJ-2 (Larimer)	1	8,141	8,499
20	Park R-3 (Larimer)	1	663	637
21	Total Council (Sum of 1,2,4,10,13,14,15,16,17,18,19,20)		92,950	99,540

The purpose of this figure is to provide the 2005 and 2010 TAY for each group of school districts used in this report.

Figure B-12 Scout, Scout Leader, TAY and Student Populations

Alternative 1

Alt.1	Scouts	Scout Officers	Rural Scouts	TAY 05-06	TAY 10-11	2010 TAY Per Scout
B	1,108	33	24	14,694	14,283	12.89
M	1,216	39	31	11,959	13,926	11.45
W	1,007	43	45	16,790	18,855	18.72
E	361	14	34	6,377	6,728	18.64
Y	675	35	118	10,163	11,136	16.50
N	625	26	149	8,667	9,496	15.19
S	189	6	20	2,181	2,395	12.67
C	1,553	23	32	13,315	13,585	8.75
L	1,196	25	54	8,804	9,136	7.64
	7,930	244	507	92,950	99,540	

Alternative 1 Modified

Alt.1 Mod	Scouts	Scout Officers	Rural Scouts	TAY 05-06	TAY 10-11	2010 TAY Per Scout
B	1,108	33	24	14,694	14,283	12.89
M	1,216	39	31	11,959	13,926	11.45
W	1,007	43	45	16,790	18,855	18.72
E	361	14	34	6,377	6,728	18.64
Y	855	41	130	12,212	13,381	15.65
N	625	26	149	8,667	9,496	15.19
S	0	0	0	0	0	
C	1,562	23	40	13,446	13,734	8.79
L	1,196	25	54	8,804	9,136	7.64
	7,930	244	507	92,949	99,539	

Alternative 2

Alt.2	Scouts	Scout Officers	Rural Scouts	TAY 05-06	TAY 10-11	2010 TAY Per Scout
B	1,108	33	24	14,694	14,283	12.89
M	1,336	44	74	12,622	14,563	10.90
W	870	42	30	15,106	17,044	19.59
E	361	14	34	6,438	6,789	18.81
Y	675	35	118	10,163	11,136	16.50
N	625	26	149	8,667	9,496	15.19
S	189	6	20	2,181	2,395	12.67
C	1,583	23	44	13,737	14,033	8.86
L	1,183	21	14	9,342	9,801	8.28
	7,930	244	507	92,950	99,540	

Alternative 3

Alt.3	Scouts	Scout Officers	Rural Scouts	TAY 05-06	TAY 10-11	2010 TAY Per Scout
B	1,108	33	24	14,694	14,283	12.89
M	1,221	39	33	13,251	16,299	13.35
W	895	42	40	14,235	15,119	16.89
E	361	14	34	6,438	6,789	18.81
Y	675	35	118	10,163	11,136	16.50
N	625	26	149	8,667	9,496	15.19
S	189	6	20	2,181	2,395	12.67
C	1,553	23	32	13,315	13,585	8.75
L	1,303	26	57	10,006	10,438	8.01
	7,930	244	507	92,950	99,540	

Alternative 3 Modified

Alt.3 Mod	Scouts	Scout Officers	Rural Scouts	TAY0 5-06	TAY 10-11	2010 TAY Per Scout
B	1,108	33	24	14,694	14,283	12.89
M	1,221	39	33	13,251	16,299	13.35
W	895	42	40	14,235	15,119	16.89
E	361	14	34	6,438	6,789	18.81
Y	675	35	118	10,163	11,136	16.50
N	625	26	149	8,667	9,496	15.19
S	0	0	0	0	0	
C	1,742	29	52	15,496	15,980	9.17
L	1,303	26	57	10,006	10,438	8.01
	7,930	244	507	92,950	99,540	

Alternative 4

Alt.4	Scouts	Scout Officers	Rural Scouts	TAY 05-06	TAY 10-11	2010 TAY Per Scout
B	1,108	33	24	14,694	14,283	12.89
M	1,221	39	33	13,251	16,299	13.35
W	718	37	25	12,099	12,741	17.75
E	361	14	34	6,438	6,789	18.81
Y	675	35	118	10,163	11,136	16.50
N	625	26	149	8,667	9,496	15.19
S	189	6	20	2,181	2,395	12.67
C	1,730	28	47	15,452	15,963	9.23
L	1,303	26	57	10,006	10,438	8.01
	7,930	244	507	92,951	99,540	

Alternative 5

Alt.5	Scouts	Scout Officers	Rural Scouts	TAY 05-06	TAY 10-11	2010 TAY Per Scout
B	1,206	33	35	15,406	15,112	12.65
M	1,123	39	22	12,539	15,469	13.64
W	865	42	28	13,813	14,671	16.96
E	361	14	34	6,438	6,789	18.81
Y	675	35	118	10,163	11,136	16.50
N	625	26	149	8,667	9,496	15.19
S	189	6	20	2,181	2,395	12.67
C	1,583	23	44	13,737	14,033	8.86
L	1,303	26	57	10,006	10,438	8.01
	7,930	244	507	92,950	99,539	

Alternative 6

Alt.6	Scouts	Scout Officers	Rural Scouts	TAY05-06	TAY10-11	2010 TAY Per Scout
B	1,211	33	43	16,699	17,485	14.44
M	1,118	39	17	11,247	13,096	11.71
W	1,363	57	77	21,874	23,210	17.03
E	0	0	0	0	0	0
Y	615	34	90	9,044	9,909	16.11
N	685	27	164	9,786	10,723	15.65
S	189	6	28	2,181	2,395	12.67
C	1,553	23	34	13,315	13,585	8.75
L	1,195	25	54	8,804	9,136	7.65
	7,929	244	507	92,950	99,539	

Alternative 7

Alt.7	Scouts	Scout Officers	Rural Scouts	TAY05-06	TAY10-11	2010 TAY Per Scout
B	1,206	33	40	15,406	15,112	12.53
M	1,123	39	17	12,540	15,470	13.78
W	1,216	52	74	20,159	21,280	17.50
E	0	0	0	0	0	0.00
Y	615	34	103	9,044	9,909	16.11
N	685	27	164	9,786	10,723	15.65
S	189	6	20	2,181	2,395	12.67
C	1,700	28	35	15,030	15,515	9.13
L	1,196	25	54	8,804	9,136	7.64
Total	7,930	244	507	92,950	99,540	

Alternative 8

Alt.8	Scouts	Scout Officers	Rural Scouts	TAY05-06	TAY10-11	2010 TAY Per Scout
B	1,206	33	41	15,406	15,112	12.53
M	1,123	39	19	12,540	15,470	13.78
W	974	39	51	16,185	17,063	17.52
E	334	19	58	5,223	5,586	16.72
Y	615	34	90	9,044	9,909	16.11
N	593	21	129	8,537	9,354	15.77
S	189	6	28	2,181	2,395	12.67
C	1,700	28	37	15,030	15,515	9.13
L	1,196	25	54	8,804	9,136	7.64
	7,930	244	507	92,950	99,540	